

Revised Disposal of Unused/Outdated Medications

To protect the water quality of our region, recommended disposal procedures for unused or outdated medications have been updated.

Do not flush prescription drugs down the toilet or drain unless the label or accompanying patient information specifically instructs you to do so.

To dispose of prescription drugs not labeled to be flushed, you may place the drugs in the household trash, but first:

- Take them out of their original containers and mix them with an undesirable substance, such as cat litter, soil or used coffee grounds. The medication will be less appealing to children and pets, and unrecognizable to people who may intentionally go through your trash.
- Put them in a sealable plastic bag, empty can, or other container to prevent the medication from leaking or breaking out of the trash bag.
- Place the sealed container in your household trash.
- If you include the drug's original container, scratch out all identifying information on the prescription label to make it unreadable to protect your identity and the privacy of your personal health information.

For more information, talk to your health care provider, your pharmacist or visit:

U.S. Food and Drug Administration
www.fda.gov/drugs and search "disposal"

U.S. Environmental Protection Agency
www.epa.gov/ppcp

Federal Guidelines on Disposal of Prescription Drugs
www.WhiteHouseDrugPolicy.gov/publications/pdf/prescrip_disposal.pdf

Prepared by:

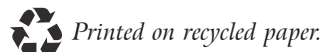
City of Springfield
Public Works Department
Division of Solid Waste Management
840 Boonville
P.O. Box 8368
Springfield, MO 65801
Recycling Hotline: 417-864-1904
www.springfieldmo.gov/recycling

Springfield/Greene County Health Dept.
227 E. Chestnut Expressway
Springfield, MO 65802
Phone: 417-864-1658
www.springfieldmo.gov/health



Springfield-Greene County
Health Department
Helping people live longer, healthier, happier lives

www.springfieldmo.gov

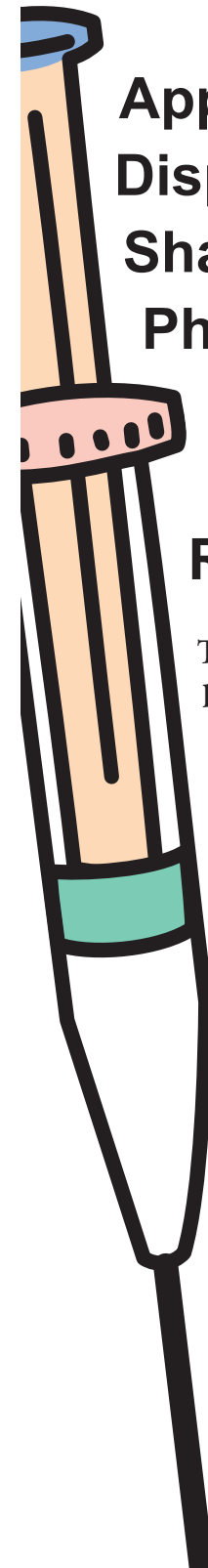


Department of Public Information
July 2010

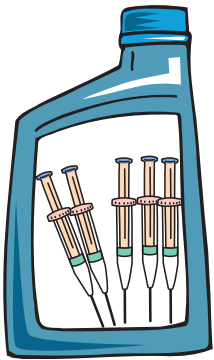
Approved Disposal of Sharps/Needles & Pharmaceuticals Generated by Households/ Residences

This flier will advise household generators of sharps (hypodermics, needles, scalpels, etc.) the requirements for treatment and packaging when disposed in the Springfield Sanitary Landfill.

Note: This information is applicable to individual residences only. All other generators of infectious waste are regulated and have treatment, transportation, and certification requirements.



Approved Residential Sharps/Needles Disposal

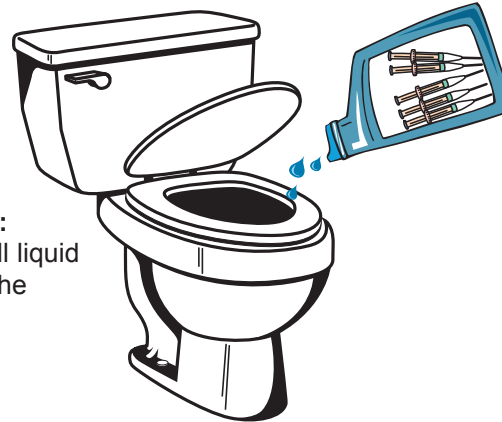


1

Step 1: Obtain a detergent bottle (preferred), or antifreeze jug. Drop sharp end of object first. Reseal bottle or jug. Store in a secure place.

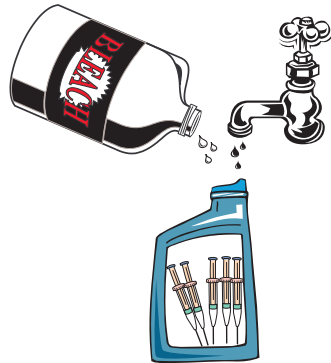
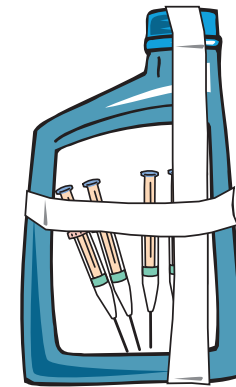
3

Step 3: Pour all liquid down the sewer.



5

Step 5: Tape securely.

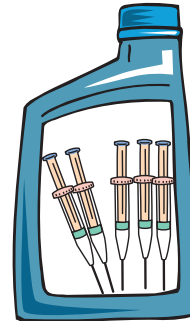


2

Step 2: When full, add one part bleach and nine parts water. Let set for 30 minutes.

4

Step 4: Reseal.



6

Step 6: Place in trash container.



By following these simple steps you can protect the health of those who handle your solid waste and comply with Missouri Solid Waste Management regulations.

- As sharps are generated they should be stored in a safe, secure place out of the reach of children.
- Sharps must be disposed in a rigid, leakproof, and puncture-resistant container prior to disposal with your household waste.
- A plastic liquid laundry detergent bottle or a one gallon antifreeze jug is a good container for sharps.
- Manufactured sharps containers are available from pharmacies.

1. When placing your used sharps in the container do not replace the protective cover over the needle or break the needle. This exposes you to the possibility of sticking yourself.
2. When the container is nearly full add a solution of one part chlorine laundry bleach (Purex laundry bleach or other 6% sodium hypochlorite bleach) and nine parts tap water. You may want to wear gloves when handling bleach as it can damage tissue. Let the solution set for thirty minutes.
3. Carefully pour all the liquid into the sanitary sewer. You may want to hold the cap near the mouth of the container to prevent sharps from falling out. Your bathroom stool may be a good choice.

4/5. After all the liquid has been drained, reseal the container and wrap it with duct tape. This will prevent the cap from coming off and alert waste handlers of the special contents.

6. Dispose of the container with your regular household waste. Your hauler should be advised you generate treated sharps. This will allow the waste hauler to take special care when they pick up your waste.

The picture guide will help you follow these simple procedures to provide a safer environment.

If you have any questions concerning special wastes or recycling please feel free to call 864-1904 or 864-2002.